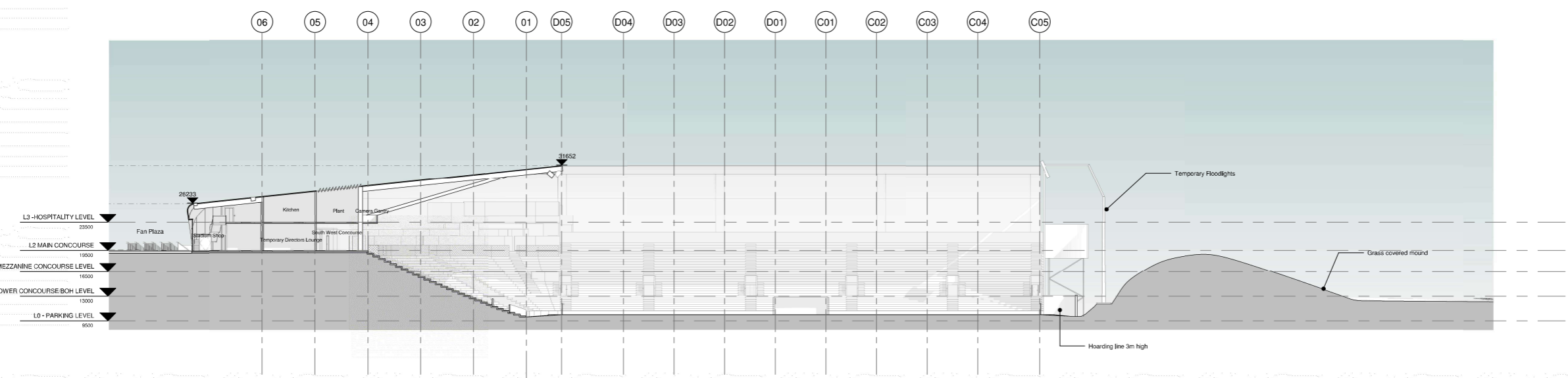
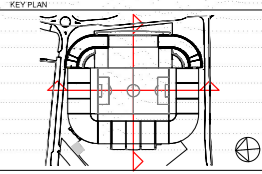
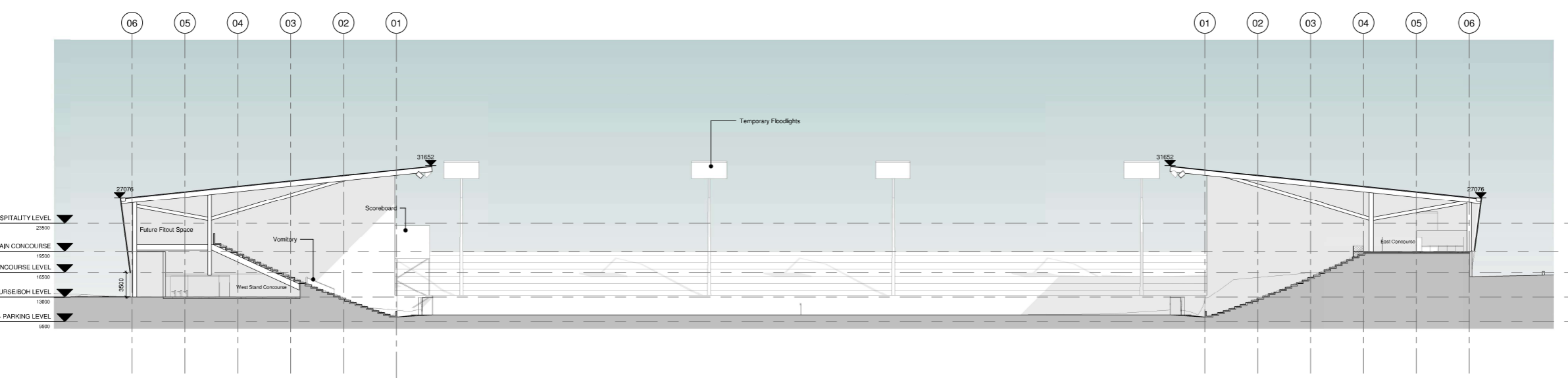


REVISIONS		
REV	DATE	DESCRIPTION



1. NORTH SOUTH SECTION - PHASE 01
1 : 250



2. EAST WEST SECTION - PHASE 01
1 : 250



© COPYRIGHT, ALL RIGHTS RESERVED
THIS DRAWING IS THE PROPERTY OF POPULOUS AND SHALL REMAIN THE PROPERTY OF POPULOUS UNLESS OTHERWISE STATED IN WRITING. NO PART OF THIS DRAWING IS TO BE REPRODUCED OR TRANSMITTED IN ANY FORM OR BY ANY MEANS, ELECTRONIC OR MECHANICAL, INCLUDING PHOTOCOPYING, RECORDING, OR BY ANY INFORMATION STORAGE AND RETRIEVAL SYSTEM, WITHOUT THE WRITTEN PERMISSION OF POPULOUS. ALL RIGHTS RESERVED.
USE THIS DRAWING IN WHOLE OR IN PART WITHOUT THE WRITTEN PERMISSION OF POPULOUS IS STRICTLY PROHIBITED.

ARCHITECT
POPULOUS
14 BLADES COURT | DECORAN ROAD | LONDON | SW15 2NU | UNITED KINGDOM
TELEPHONE: +44 (0)20 8874 7866 | FACSIMILE: +44 (0)20 8874 7470
E-MAIL: INFO@POPULOUS.COM | WWW.POPULOUS.COM

PROJECT NAME
SOUTHEND UNITED FC

DRAWING TITLE
**NORTH/SOUTH, EAST/WEST
PHASE 01**

STATUS	PROJECT NO.						
FOR PLANNING	3093						
DATE	SCALE						
24.03.2017	1 : 250						
SIZE							
A0							
DRAWN	CHECKED	APPROVED					
OC	CC	MT					
PROJECT	ORIGIN	ZONE	LEVEL	TYPE	ROLE	DRAWING	REV
SUS-POP-ZX-ZZ-SE-A-	0200	00					